

# DT862 Three-phase Watt-hour Meter

## Application

The DT862 three-phase & four-wire and DS862 three-phase & three-wire AC watt-hours meters are mechanically inductive meters. As standard products, they are to meter AC active watt-hours Energy of three-phase & four-wire and three-phase & three-wire, whose technology index complies with the standard of GB/T15283-1994, a China nation standard, and IEC521.

## Structure feature

The product consists of three-group electromagnetic components, dual round plate, damp electromagnetic steel, aluminum alloy bracket, metering unit of five- or six-position, wiring box and enclosure. The structure of electromagnetic component is of separation style. The electromagnetic component stands at the two sides of the basic bracket to improve the stability. The voltage iron core is of enclosed insertion style. The damp component is made of Al-Ni-Cobalt magnet steel and fitted with thermal magnetic alloy for temperature compensation. The rotation system has been undergone balance calibration. The bearing is of dual-gemstone structure fitted with shake-proof spring to extend the service life.

## Specification and main technical data

| Type  | Reference voltage(V) | Basic current Ib(A)                             | Reference frequency(Hz) | Accuracy (class) | Starting current(%Ib) | Voltage circuit | Active power consumption of |
|-------|----------------------|---|-------------------------|------------------|-----------------------|-----------------|-----------------------------|
| DS862 | 380/220V             | 3 x 1.5(6) 3 x 5(20)                            | 50~60                   | 2                | ≤0.5                  | 2×7<br>3×7      | 2×1<br>3×1                  |
| DT862 |                      | 3 x 10(40) 3 x 15(60)<br>3 x 20(80) 3 x 30(100) |                         |                  |                       |                 |                             |



DT862  
black plastic cover



DT862  
black plastic cover  
multitarriff type



DT862  
aluminium cover

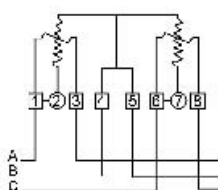


DT862  
transparent cover

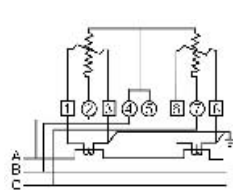


DT862  
black bakelite cover

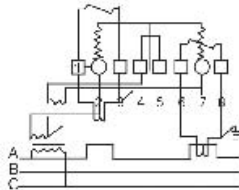
## Wiring diagram



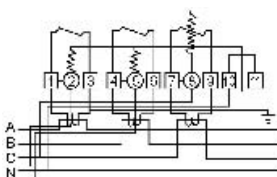
DS862  
Model DS862 direct-connection type



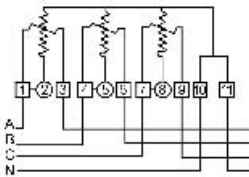
DS862  
Model DS862 connection-by-current transformer type



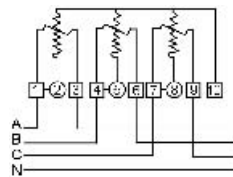
DS862  
Model DS862 connection-by-current transformer type



Model DS862 voltage transformer type



Model Dt862  $I_{max} < 40A$  direct-connection type



Model DT862  $I_{max} \geq 40A$  direct-connection type

## Outer and mount dimension

